

The Netherlands

Transactions per quarter

Number of transactions

	2019-3	2020-2	2020-3*	%qtr.	%yr.
terraced house	10048	11217	11283	0,6	12,3
corner house	5267	5734	5911	3,1	12,2
semi-detached house	5734	6573	6749	2,7	17,7
detached house	6066	6334	7364	16,3	21,4
apartment	9234	8987	10277	14,4	11,3
total properties	36349	38845	41583	7,0	14,4

* =provisional estimate

Transaction price (in thousands of euros)

	2019-3	2020-2	2020-3*	%qtr.	%yr.
terraced house	268	293	301	2,8	12,1
corner house	291	313	325	4,1	11,5
semi-detached house	335	365	374	2,6	11,5
detached house	464	484	527	7,1	12,9
apartment	265	285	294	3,1	10,3
total properties	314	337	354	3,8	11,6

* =provisional estimate

Transaction price per square metre

	2019-3	2020-2	2020-3*	%qtr.	%yr.
terraced house	2377	2588	2623	1,8	10,6
corner house	2383	2561	2641	3,0	10,1
semi-detached house	2417	2574	2633	2,5	8,9
detached house	2700	2811	2974	3,9	9,1
apartment	3160	3405	3470	1,6	9,2
total properties	2632	2803	2892	2,4	9,7

* =provisional estimate

Time on market (in days)

	2019-3	2020-2	2020-3*	%qtr.	%yr.
terraced house	28	21	24	11,4	-14,5
corner house	32	23	26	14,4	-17,3
semi-detached house	37	25	26	8,1	-26,6
detached house	65	48	49	6,8	-23,1
apartment	29	23	27	20,2	-4,4
total properties	37	27	30	12,6	-15,8

* =provisional estimate

Market sentiment indicator (in millions of euros)

	2019-3	2020-2	2020-3*	%qtr.	%yr.
terraced house	2943	3561	3690	3,6	25,4
corner house	1658	1931	2103	8,9	26,8
semi-detached house	2007	2491	2607	4,6	29,9
detached house	3048	3304	4216	27,6	38,3
apartment	2761	2834	3379	19,2	22,3
total properties	12418	14121	15993	13,3	28,8

* =provisional estimate

Figure: Number of transactions per quarter (x1000)

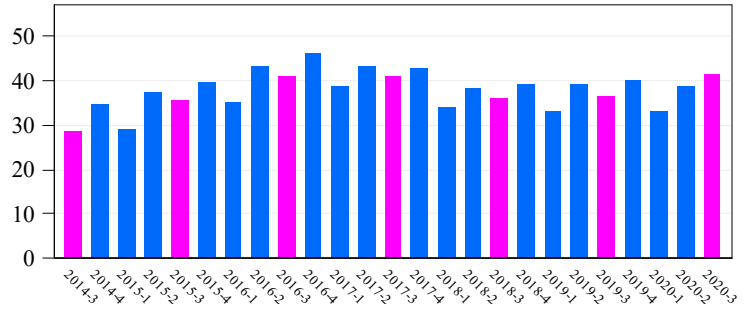


Figure: Year-over-year trends in transaction price

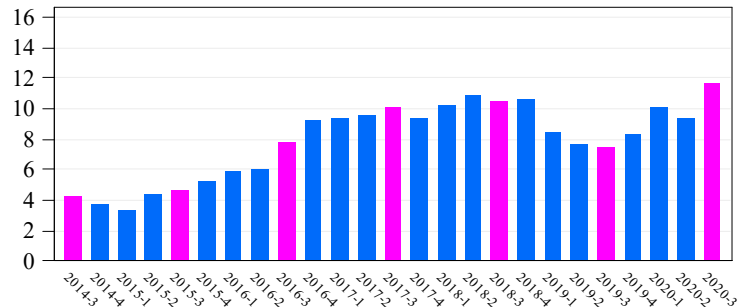


Figure: Year-over-year trends in transaction price per square metre

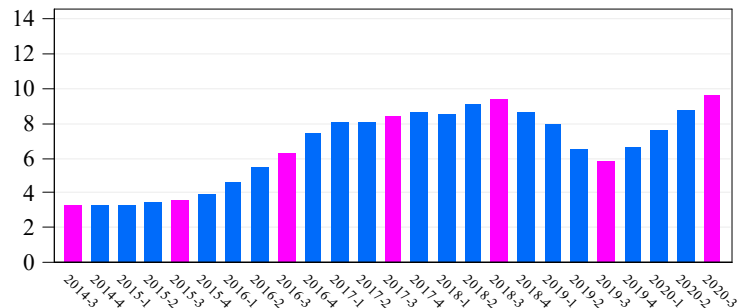


Figure: Time on market (in days)

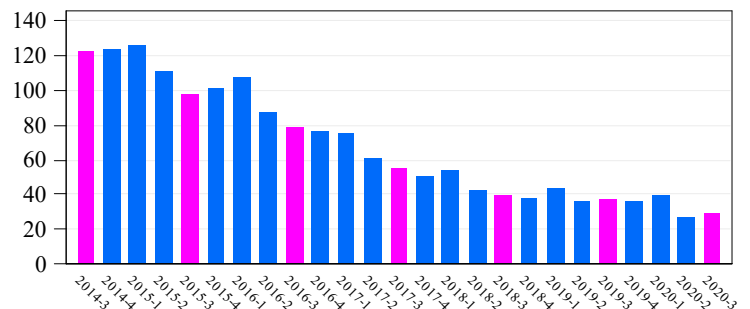


Figure: Market sentiment indicator (in millions of euros)

